



# INFO PACK

Thank-you for your interest in becoming the next Red Light Center Working Girl or Guy!  
This info pack will explain everything you'll need to know to be a successful RLC Working Person.

---

## Table Of Contents

ABOUT RLC, AVATARS, SYSTEM REQUIREMENTS	2
ABOUT RLC WORKING GIRLS/GUYS	3
MEMBER TYPES	4
DISPLAYING BADGE	5
VIRTUAL SEX, SOLICITING, MOVES, IMAGES	6
FETISHES, OPTIONS, IMAGES	7
MONEY, RAYS	8
RLC MARKET PLACE	9
DETERMINING YOUR RATE	10
WORKING GIRL/GUY DIRECTORY	11
FINDING NEW CLIENTS	14
RULES	15
TIPS AND TRICKS, CONTACT INFO	16

---

## WHAT IS RED LIGHT CENTER AND UTHERVERSE?

Uthervers is a social networking 2D website connected to a 3D virtual world network. This is where you can create and customize your personal profile, upload photos, describe yourself, and search for other members you would like to meet.

Red Light Center is a 3D animated, virtual community where members can socialize with each other using “avatars”, and access the Uthervers profiling system by right clicking on other avatars. Your Uthervers login information will work to access Red Light Center and vice versa.

## HOW DO I ACCESS RED LIGHT CENTER?

Red Light Center is a completely safe downloadable application. You will need to install a copy of Red Light Center on your computer before you begin to navigate through the 3D world. The easiest way to download this application is to visit:

<http://download.redlightcenter.com>

## WHAT IS AN AVATAR?

Avatars are life-like animated and customizable characters used inside Red Light Center. (See example on the right)

## CAN I CHANGE THE LOOK OF MY AVATAR?

Definitely! You may change your sex, race, body, face, eyes, and hair, add tattoos and piercings as well as choose from a variety of sexy outfits. Do this by clicking the shirt icon in the upper right hand corner of the screen in the RLC client.

For more advanced users, there are many additional clothing and avatar customizable options available within the community. Take the time to explore the available closet and chat with other members as you create your perfect avatar.



## WHAT EQUIPMENT DO I NEED TO HAVE?

### MINIMUM SYSTEM REQUIREMENTS:

**PROCESSOR/CPU:** Intel Pentium 4 or AMD Equivalent

**OPERATING SYSTEM:** Windows 7 /Vista /XP

**RAM:** 2 GB

**DIRECTX:** DirectX® version 9.0c

**VIDEO CARD:** Geforce 6 or higher. With 128 MB recommended.

**SOUND CARD:** DirectX® 9 certified sound card

**CONNECTION:** Multiplayer via Internet DSL or Cable High Speed Internet

### OPTIONAL:

**WEB CAM:** If you provide a Cam option make sure you have a good quality web cam.

**MIC, SKYPE, OR LONG DISTANCE PLAN:** If you wish to provide a Phone-sex option.

**CHAT CLIENT:** Either MSN Messenger, AIM – to broadcast your webcam to clients.

**PAYPAL ACCOUNT:** You will need to set up an account in order to receive funds.

**SPEAKERS:** Sound in RLC is great! Necessary for Audio Sessions.

## MAC / MACSPECS

WHAT ARE RLC WORKING GIRLS/GUYS?

Red Light Center working people are RLC members who offer virtual sex sessions to other members. Some WG’s combine webcam shows and/or phone-sex (via Skype or telephone) with their virtual sex sessions. There are three different levels of WG’s: **STANDARD, LISTED/PREMIUM, VERIFIED**

How do I Display my WG badge?

- 1. Click “Settings” in your profile.
- 2. Check (or uncheck to remove) the box beside “I am an Erotic Services Provider”.
- 3. Click “Save Changes”.
- 4. You will receive an e-mail from the WG Manager, welcoming you to the program.

Once you have enabled the WG option in your settings, you will need to turn on your badge.

- 1. Log into your Uthervers profile here: [www.utherverse.com](http://www.utherverse.com)
- 2. On the ‘Home’ page of your profile, scroll down to see a ‘Your Badges’ section. Select ‘Working Girl/Guy’.
- 3. Your page should refresh with your new badge title. To switch your WG badge OFF, simply select ‘No badge’.

Log out and back in the client for changes to take effect.



[Working Girl]  
STANDARD WG BADGE

☆  
[+Working Girl+]  
LISTED WG BADGE

Being a **STANDARD WG** means you are a member experimenting with WG status. You can provide virtual sex sessions in exchange for rays and advertise on the WG [Forum](#) however you are not listed in the [directory](#).  
  
Your ‘Standard’ status is shown with your name in a **RED** badge with the headline ‘Working Girl/Guy’.

Being a **LISTED/PREMIUM WG** means you have been trained and are fully versed on the rules, regulations and proper WG etiquette. You also have the option of being verified by the WG office which means your age; photos and gender have been confirmed. (To be verified you will need to submit a copy of your photo ID). Premium WG’s are listed in the WG [Directory](#), advertising their stats, availability, services, rates and specials. More info pg. 11

*If you are interested in making money as a WG, we HIGHLY recommend becoming a Listed/Premium WG. Gender verifying is also recommended as you will be offering peace of mind to your clients.*

## DO YOU HAVE WORKING GUYS?

Absolutely! You don't have to be a woman to benefit from our WG program. Working GUYS are also in demand whether they provide gay, bi-sexual, or straight virtual sex sessions. Working Guys can be Standard, Listed/Premium, or Verified WG's and can also advertise on the WG [Directory](#). Same fees apply.

Available Working Guys are shown with a **RED BADGE** – Standard **[Working Guy]** Listed/Premium **[+Working Guy+]** & a **RED STAR**. Verified **[+Verified WG+]**

## HOW CAN A MEMBER TELL IF I'M A WORKING GIRL/GUY?

When logged into Red Light Center, you will notice avatars have their names and in some cases, titles hovering above their heads in different colors. These are called **badges**.

A member is able to tell WG's by their **RED** badges. You will have the option of turning your WG badge off whenever you like. You can make this change in your profile.

## THE SEVEN TYPES OF RLC MEMBERS:

Make sure you study the chart below and familiarize yourself with the 7 types of members:

<b>BASIC MEMBER</b> <b>GREEN</b>	These members are limited to what they can do in RLC. They are unable to participate in sexual acts, no nudity, no instant messages etc. (Do not ignore these members, they are potential clients and shouldn't be snubbed.)
<b>VIP MEMBER</b> <b>YELLOW</b>	These members have full access to all the adult entertainment RLC has to offer as well as the ability to send private messages to other members. VIP members can have sex, so feel free to service them.
<b>STANDARD WG</b> <b>RED BADGE</b>	These are members experimenting with WG status. They are not listed in the directory but can provide virtual sex sessions in exchange for Rays. They do not have the ability to be verified by RLC.
<b>LISTED WG</b> <b>RED BADGE</b>	These members have been trained and are fully versed on the rules, regulations and proper WG etiquette. Their sex, age and appearance can be verified by RLC staff. These WG's are listed on the WG directory and have use of the Alley Windows.
<b>VERIFIED WG</b> <b>RED BADGE</b>	These members have been fully verified by RLC, their Age, Gender & Photos listed on their WG directory profiles have been verified as true. These members can charge more for their services.
<b>VOLUNTEERS</b> <b>YELLOW BADGE</b>	These are members that volunteer their time to help new members of Utherverso get acquainted with our community. If you tip these members they may send you some business. (Guide, Leader, Ambassador, XXX Ambassador etc.)
<b>STAFF</b> <b>BLUE BADGE</b>	These members with the blue badge 'STAFF' above their heads are RLC staff.



JohnnyBoi	tidleyWINK	[Working Girl] Jessica_Rabbit	[+Working Girl+] InATizzy	[+Verified WG+] EyesOnU	[Guide] JennyGER	[Staff] MissNadine
BASIC MEMBER	VIP MEMBER	STANDARD WG	LISTED WG	VERIFIED WG	VOLUNTEER	STAFF MEMBER



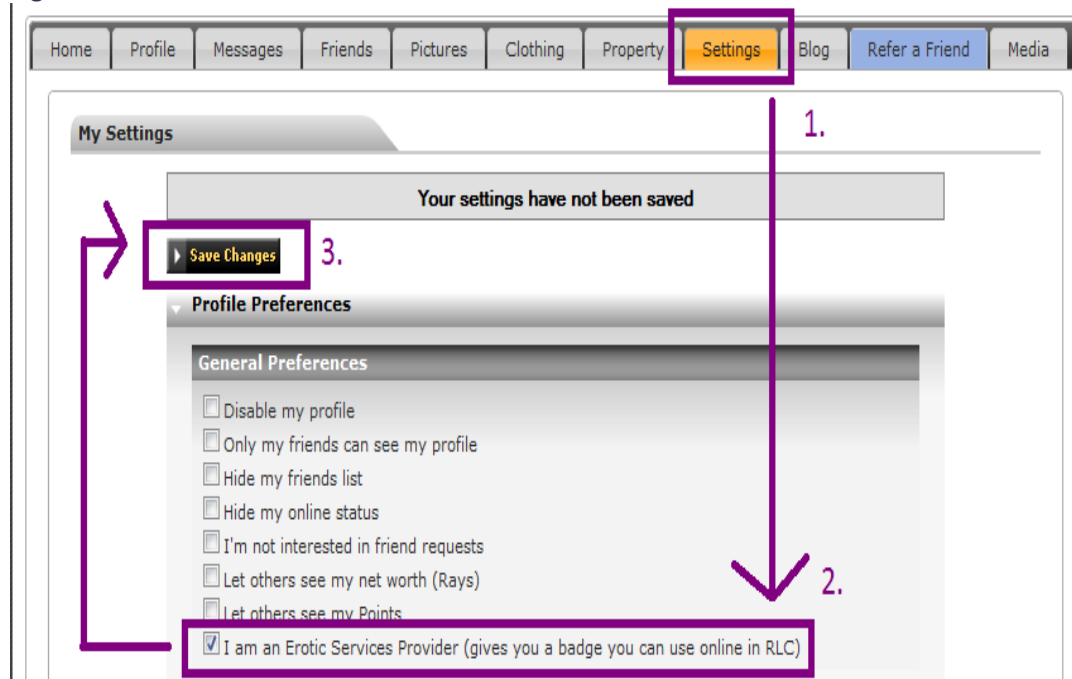
## HOW DO I DISPLAY MY BADGE?

These are numbered accordingly in Fig. 1.

(If you are logged in RLC, you will need to log out and back in for the changes to take effect.)

1. Click 'Settings' on your profile.
2. Check (or uncheck to remove) the box beside 'I am an Erotic Services Provider'
3. Click 'Save Changes'

Fig. 1



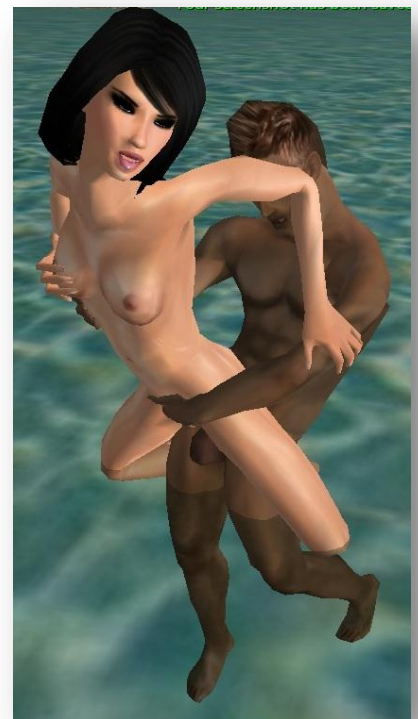
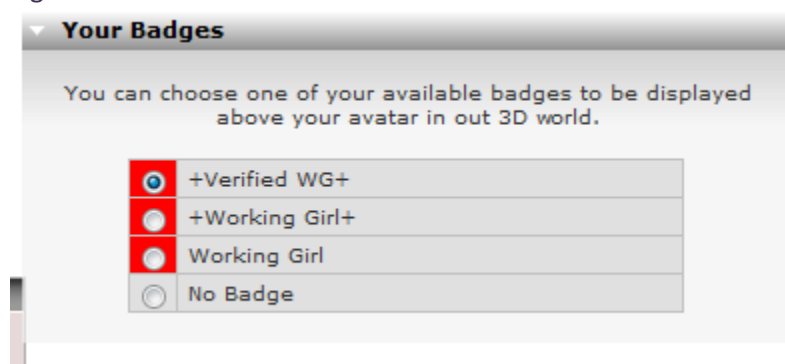
## HOW DO I TURN MY BADGE ON & OFF?

Once you have enabled the WG option in your settings (shown above), you will need to 'turn on your badge'.

1. Log into your Social Center profile.
2. Choose the 'Home' tab, and scroll down. You'll now see a 'Your Badges' box. Select 'Working Girl/Guy'.
3. Your page should refresh with your new badge title.

To switch your WG badge OFF, simply select no badge.

Fig.2



HOW DO I HAVE VIRTUAL SEX?

It’s easy! First you will need to find a willing partner. Second, you will need to be within one of the many designated sex areas. Third, make sure your avatar is naked. Once your avatar is naked you can right click on your partner and select the ‘invite for sex’ option. Your partner will then ‘accept or deny’ your invitation, once accepted choose your preferred sex apparatus in the room. A long list of sex positions should appear on the right hand side of the screen. Click away and have fun!



*To get naked, simply click on the avatar icon in the upper right hand corner of the screen. To remove pants/skirt click on the legs of the icon and so on. Only VIP members can get naked. (Shown on the right.)*

WHERE CAN I SOLICIT MY SERVICES?

There are many places to solicit within Utherverse/Red Light Center, following is a list of public (Utherverse owned areas) that allow WG solicitation:

- \* Bareback Bordello
- \* NightCandy Gentlemen’s Club
- \* Cam Girl Alley
- \* Blu's Club
- \* Passion Pit
- \* Passions Lobbies
- \* Pink 'O'
- \* Tartarus
- \* The Alley
- \* Faster Pussycat
- \* Gay Alley
- \* Gay Cam Alley
- \* Fantasy Hotel Lobby
- \* Tiberius Casino & Resort
- \* Rude World, with the exception of some private clubs.



Rules differ from place to place, always ask the owners of the clubs before soliciting. **\*NEVER solicit w/o your badge.\***

IF AN AREA IS NOT MENTIONED ON THIS LIST, IT MEANS YOU ARE NOT PERMITTED TO SOLICIT THERE!

**NEVER** solicit your services in General Chat; implying payment for services in any way is an offence. Sexy chat is allowed in general chat, however if you are being extremely vulgar and the general public has concerns, please be respectful and take it to PM.

Example of solicitation: “Will suck for a buck, PM me for details.”  
Example of non-solicitation: “Likes cool whip and thinks whips are cool. PM me to try either.”

WHAT SEX MOVES CAN I DO?

Here are some of the current sex moves available:

- FEMAL ORAL	- FLIRTING	- STRAP ON DOGGY
- MALE ORAL	- ANAL MISSIONARY	- FEMALE MASTERBATE
- MISSIONARY	- ANAL COWGIRL	- FEMALE MASTERBATE W/VIB
- SIXTYNINE	- ANAL DOGGY	- MALE MASTERBATE

- |           |                       |                    |
|-----------|-----------------------|--------------------|
| - COWGIRL | - MACHINE DOGGY       | - MALE HAND JOB    |
| - SITTING | - MACHINE MISSIONARY  | - FEMALE HAND JOB  |
| - CUDDLE  | - MACHINE SITTING     | - FEMALE VIB JOB   |
| - SPOON   | - STRAP-ON COWGIRL    | - KNEELING KISSING |
| - DOGGY   | - STRAP-ON MISSIONARY | - MACHINE COWGIRL  |
| - MASSAGE | - STRAP-ON SITTING    | - & HUNDREDS MORE  |



#### WHAT IS A 'WG WHO CATERS TO FETISHES'?

Some WG's are comfortable providing fetish sessions. Fetish sessions may include – Med Play, Domination, BDSM, Role Play (no age play)... the list goes on and on. Wearing sexy lingerie or a furry teddy-bear outfit can also be a fetish. If you have questions regarding a fetish request e-mail [wg@utherverse.com](mailto:wg@utherverse.com).

#### WHERE CAN I FIND THE FETISH EQUIPMENT?

There are special BDSM rooms in RLC that are equipped with props such as clamps, restraints, whips etc. You can find these rooms in the Bareback Bordello, Passion Pit, Fantasy Hotel and upstairs at Night Candy's Gentlemen's Club.

#### CAN I PROVIDE DUO SESSIONS WITH ANOTHER WG?

Yes, you can provide a duo session with another WG. Just right click on your client and select the 'invite for threesome' option. *As of now, sexual encounters in RLC are limited to 3 members only, however voyeurism is always available!*

#### WHAT TYPE OF FETISH OPTIONS ARE AVAILABLE IN RLC?

These are just SOME of the fetish options available:

- |                |         |           |             |           |
|----------------|---------|-----------|-------------|-----------|
| - BACK VIBRATE | - FLAIL | - CLAMPS  | - HANGING   | - CANE    |
| - BACK SEX     | - WHIP  | - CROSSES | - BOUND SEX | - SHOCKER |



# MAKING MONEY

## HOW DO I EARN RAYS?

There are many ways to earn Rays within RLC, in particular the Working Girl/Guy program. Partaking in virtual sex sessions with another member in exchange for rays is one of the highest money earning opportunities RLC has to offer. Before your session your client will deposit your 'fee' into your 'Ray Bank Account' located on your Social Center profile page.

## WHAT ARE RAYS?

'Ray' is the official RLC currency. '100 Rays is roughly equivalent to \$7USD. *(Based on the average market price for Oct. 2011)*

## BUT I WANT TO EARN REAL MONEY!

Don't worry, you have the ability to trade your earned Rays in for REAL cash in the 'Ray Marketplace'. It's VERY easy to do. *(Info on the Marketplace on next page)*

## HOW MANY RAYS CAN I EARN?

This depends on many factors... your rate, your reviews/service, how you attract potential clients, how many hours you work, whether you provide Cam Shows or Phone Sex. Currently WG's providing cam and/or phone sex options earn 3 times more than WG's providing virtual sex alone. *On page 10 you'll find a suggestive Rate Chart which will determine a rough idea of how much you could earn per session.*

## CAN I MAKE MORE MONEY?

Absolutely! We have an amazing refer a friend program. Invite your real life connections to join you in Utherville, if your friend joins Utherville you both automatically receive ®25! Once they have experienced Utherville for themselves and see what it has to offer, they are sure to upgrade to VIP and then you both receive ®150 instantly. Click [here](#) for more information.

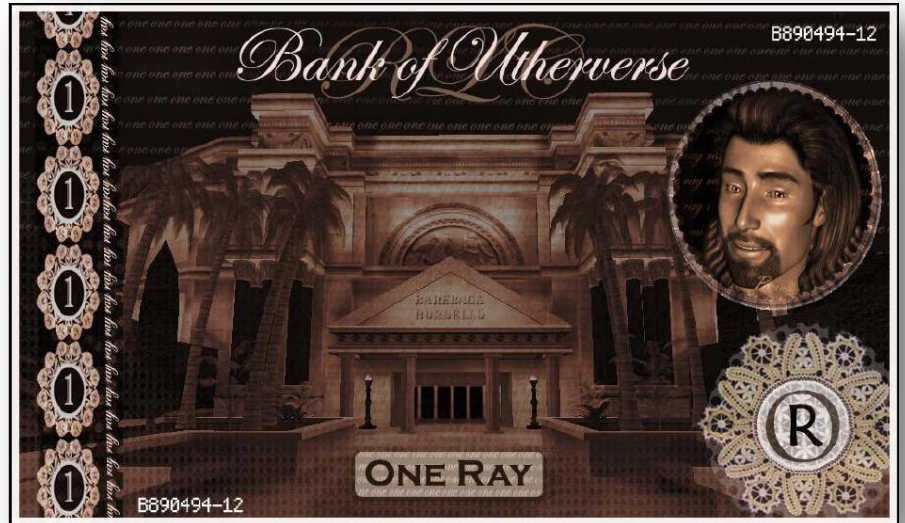
*Need help on your quest to make more money?*

*The working girl manager will keep you up to date with current promotions and distribute information packages to those WG's who are serious about making money!*

*Please email her [wq@utherville.com](mailto:wq@utherville.com) for more details.*

## WHAT DOES RLC GET OUT OF THE DEAL?

RLC does not take a portion of your Rays you earn from your sessions. We do however take a small fee (currently 4-5%) when Rays are sold in the Marketplace. (This applies to all members.)





WHAT HAPPENS TO RAYS WITHIN MY ‘RAYS ACCOUNT’ WHEN I MAKE A SELL OFFER?

After you make a sell offer, Rays are taken from your ‘Rays Account’ and held in Escrow. This means that they are in ‘holding’ until someone has met your offer to sell. Once the offer is met, you will see the money for this action deposited into your ‘Trader Account’. Each time that you place an offer on the market, a time limit or expiry is attached to the offer. If the sell offer has not been met within a certain time limit (7 days), the Rays will be returned to your ‘Rays Account’.

WHAT IS THE RAY MARKETPLACE?

The Ray Marketplace is an exchange where users can buy/sell Rays using real currency.

Visit the RLC Marketplace by clicking ‘BUY/SELL ON MARKETPLACE’ under the ‘Your Rays’ section on your profile page.

HOW DO I GET MONEY OUT?

In order to take money out, you must first make a small transfer of funds by [AlertPay](#) (\$1) into the program so that we can activate the account. This only needs to happen once. After this point, you may add or remove money from the program to your AlertPay account as often as you like.

MARKETPLACE

RLC MARKETPLACE 2011-10-24

24hr Volume: @72386   Exchange Rate: 0.07   Selling: @304874   Buying: @208973

Market Tools

Market Information

Exchange Rate: 0.07

Your Portfolio

Bank Account: @1555.51  
«reserved»: @0.00

Trader Account: \$0.00  
«reserved»: \$0.00

Cash Transfer

Deposit   Withdraw

Analysis

Transaction History

Bid Placement

Sell

Buy

GET MONTHLY RAYS!

Click Here

Selling

Offer	Expires	Units	Price/Ray
Sell Offer 1	0d 0h 7m	@500	\$0.075
Sell Offer 2	0d 0h 25m	@500	\$0.075
Sell Offer 3	0d 0h 38m	@65	\$0.075
Sell Offer 4	0d 0h 39m	@500	\$0.075
Sell Offer 5	0d 0h 45m	@500	\$0.075
Sell Offer 6	0d 0h 57m	@506	\$0.075
Sell Offer 7	0d 1h 7m	@500	\$0.075
Sell Offer 8	0d 1h 22m	@500	\$0.075
Sell Offer 9	0d 1h 34m	@1500	\$0.075
Sell Offer 10	0d 1h 43m	@500	\$0.075
Sell Offer 11	0d 2h 26m	@500	\$0.075
Sell Offer 12	0d 2h 48m	@500	\$0.075
Sell Offer 13	0d 3h 59m	@500	\$0.075
Sell Offer 14	0d 4h 29m	@500	\$0.075
Sell Offer 15	0d 4h 44m	@500	\$0.075
Sell Offer 16	0d 5h 46m	@500	\$0.075
Sell Offer 17	0d 5h 46m	@659	\$0.075
Sell Offer 18	0d 6h 6m	@500	\$0.075
Sell Offer 19	0d 6h 9m	@515	\$0.075
Sell Offer 20	0d 6h 14m	@1000	\$0.075
Sell Offer 21	0d 6h 26m	@531	\$0.075
Sell Offer 22	0d 6h 53m	@500	\$0.075
Sell Offer 23	0d 7h 15m	@500	\$0.075
Sell Offer 24	0d 8h 8m	@500	\$0.075
Sell Offer 25	0d 8h 37m	@500	\$0.075
Sell Offer 26	0d 8h 38m	@500	\$0.075
Sell Offer 27	0d 8h 41m	@500	\$0.075
Sell Offer 28	0d 9h 59m	@508	\$0.075
Sell Offer 29	0d 10h 15m	@500	\$0.075
Sell Offer 30	0d 10h 26m	@2500	\$0.075
Sell Offer 31	0d 10h 52m	@500	\$0.075
Sell Offer 32	0d 11h 44m	@500	\$0.075
Sell Offer 33	0d 11h 59m	@750	\$0.075
Sell Offer 34	0d 12h 32m	@666	\$0.075
Sell Offer 35	0d 12h 50m	@500	\$0.075
Sell Offer 36	0d 14h 12m	@940	\$0.075
Sell Offer 37	0d 14h 48m	@500	\$0.075
Sell Offer 38	0d 15h 10m	@666	\$0.075
Sell Offer 39	0d 15h 47m	@500	\$0.075
Sell Offer 40	0d 15h 53m	@500	\$0.075

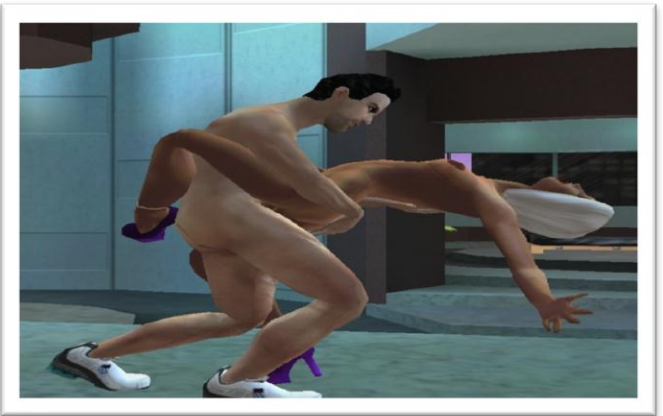
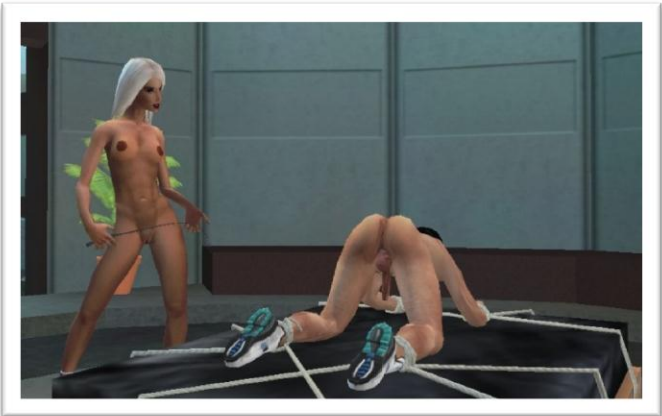
Buying

Offer	Expires	Units	Price/Ray
Buy Offer 1	3d 22h 10m	@714	\$0.070
Buy Offer 2	3d 22h 19m	@2500	\$0.070
Buy Offer 3	3d 23h 19m	@2500	\$0.070
Buy Offer 4	3d 23h 49m	@5	\$0.070
Buy Offer 5	4d 0h 29m	@2500	\$0.070
Buy Offer 6	4d 0h 48m	@300	\$0.070
Buy Offer 7	4d 1h 29m	@2500	\$0.070
Buy Offer 8	4d 1h 59m	@515	\$0.070
Buy Offer 9	4d 2h 39m	@2500	\$0.070
Buy Offer 10	4d 3h 18m	@671	\$0.070
Buy Offer 11	4d 3h 39m	@2500	\$0.070
Buy Offer 12	4d 3h 48m	@185	\$0.070
Buy Offer 13	4d 3h 48m	@280	\$0.070
Buy Offer 14	4d 4h 25m	@250	\$0.070
Buy Offer 15	4d 4h 31m	@500	\$0.070
Buy Offer 16	4d 4h 42m	@500	\$0.070
Buy Offer 17	4d 4h 49m	@2500	\$0.070
Buy Offer 18	4d 5h 49m	@2500	\$0.070
Buy Offer 19	4d 6h 49m	@2500	\$0.070
Buy Offer 20	4d 6h 51m	@100	\$0.070
Buy Offer 21	4d 7h 12m	@500	\$0.070
Buy Offer 22	4d 7h 47m	@170	\$0.070
Buy Offer 23	4d 7h 49m	@2500	\$0.070
Buy Offer 24	4d 8h 59m	@2500	\$0.070
Buy Offer 25	4d 9h 59m	@2500	\$0.070
Buy Offer 26	4d 10h 59m	@2500	\$0.070
Buy Offer 27	4d 11h 21m	@311	\$0.070
Buy Offer 28	4d 11h 52m	@350	\$0.070
Buy Offer 29	4d 12h 9m	@2500	\$0.070
Buy Offer 30	4d 12h 59m	@500	\$0.070
Buy Offer 31	4d 13h 19m	@2500	\$0.070
Buy Offer 32	4d 13h 40m	@600	\$0.070
Buy Offer 33	4d 14h 29m	@2500	\$0.070
Buy Offer 34	4d 14h 48m	@500	\$0.070
Buy Offer 35	4d 15h 11m	@686	\$0.070
Buy Offer 36	4d 15h 16m	@896	\$0.070
Buy Offer 37	4d 15h 29m	@2500	\$0.070
Buy Offer 38	4d 16h 39m	@2500	\$0.070
Buy Offer 39	4d 17h 39m	@2500	\$0.070
Buy Offer 40	4d 18h 39m	@2500	\$0.070

FAQ | Customer Support | Terms of Service | Privacy Policy | QA | World-Ops | Resources | Advertising | Webmasters | Legal

WHAT DOES ‘RAYS ACCOUNT’ AND ‘TRADER ACCOUNT’ MEAN? IS THERE A DIFFERENCE?

Your ‘Rays Account’ is the current number of Rays that you have collected. These can either be earned through our Social Center, our 3D World(s) or they can be purchased through the exchange. Your ‘Trader Account’ is the total amount of actual currency (USD) that you may purchase Rays with OR cash out to your AlertPay account.



## HOW WOULD I DETERMINE MY RATE?

We do not have set rates... YOU decide your rate and you have the ability to change your rate at any time or offer specials. We suggest that you use trial and error until you find a rate that works for you. Some ladies charge less and offer specials but make A LOT due to the number of clients they attract due to their affordability.

Below is a SUGGESTED rate chart for entertainment purposed only, that might give you an idea of what to charge. *Remember that this is ONLY A SUGGESTION.... Maybe you are someone who has always had the fantasy of getting paid for sex, being a 'whore for hire', in which case you could charge very little or nothing at all.*

LOOKS (very unattractive) 1-5 (very attractive)			
Rate your Looks	Rate your face on a scale of 1-5 then MULTIPLY that number by 5	ADD	
VERIFIED			
Gender Verified	Is the gender listed on your directory profile your REAL gender?	+ 15	
Age Verified	Is the age listed on your directory profile your REAL age?	+ 25	
Photo Verified	Are the photos shown on your directory profile REAL & CURRENT photos of you?	+ 30	
SERVICES OFFERED			
Virtual Sex ONLY	If you wish to provide virtual sex ONLY (no cam/phone sex)	+ 30	
Toy Show	If you include a sex-toy show in your sessions	+ 25	
Fetishes	If you provide fetish sessions	+ 25	
Cam	If you include a Webcam show in your sessions	+ 50	
Phone	If you provide Phone Sex/Audio ONLY (w/o a cam show)	+ 30	
Phone	If you provide Phone Sex/Audio (with cam show)	+ 15	
REVIEWS			
No reviews (NEW)	To get your first review you could offer a 'NEW GIRL' Special	- 20	
All good	All of your reviews are positive & honest	+ 40	
Mostly good	You have a mix of good and average reviews	+ 20	
Mostly bad	You have mostly bad and average reviews	- 20	
All bad	You have all bad reviews	- 40	
Reviews from friends	You have many reviews from friends and fellow WG's (not honest reviews)	- 50	
Your total will equal a <u>suggested</u> rate amount in Rays <b>per 15/20 MIN SESSION.</b>		<b>TOTAL</b>	

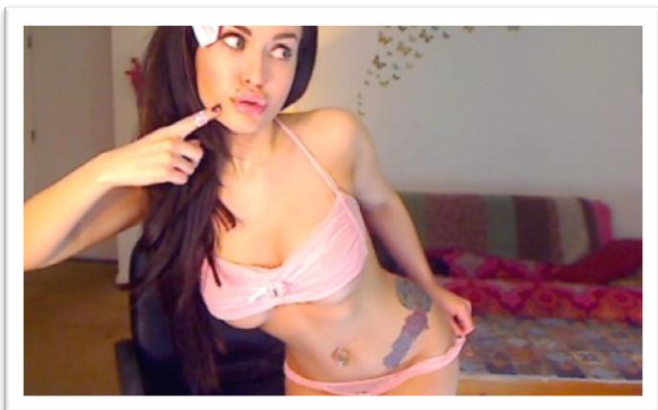
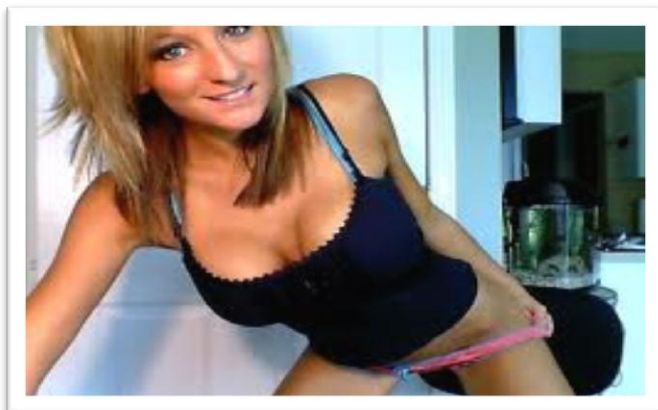
*False/Fake reviews added by your friends won't get you anywhere and are easily spotted. ONLY allow those who have enjoyed your services to post a review on your profile. False reviews are subject to removal by the WG Department.*

**CAM SHOW-** Providing your client with a sexy web-cam show.

**PHONE SEX-** Talking dirty to your client during a session via SKYPE or MSN/YAHOO etc.

**TOY SHOW-** Having fun with your favorite sex toys on web-cam or during phone sex.

**FETISH SESSION-** Role Playing sessions with fetish equipment such as whips, floggers, hand-cuffs etc.





# WORKING GIRL DIRECTORY

[WWW.WG.REDLIGHTCENTER.COM](http://WWW.WG.REDLIGHTCENTER.COM)

The WG DIRECTORY is a database of Premium RLC Working Girls/Guys.

The directory allows WG's to advertise their services and attract clients while also allowing potential clients the ability to search, review and book their next RLC Session with their preferred RLC Working Girl/Guy.

Fig. 3

The screenshot displays the homepage of the Working Girl Directory. At the top, the header features the 'WG' logo, a navigation menu with links to HOME, TOP 10, SEARCH, SPECIALS, REVIEWS, and WG LOGIN, and a 'POWERED BY UTHERVERSE' badge. Below the header is a row of image thumbnails, including several labeled 'YOU?'. A central 'GOLD AD SPOT' features a large image of a woman in a leather vest and plaid skirt, accompanied by a text block from 'MamaSIN' and a 'BROWSE' button. To the right is a 'QUICK SEARCH' form with filters for Gender, Age, and Offerings (Audio, Cam, Fetish, Toys), and a 'SEARCH NOW' button. At the bottom left, a 'PLATINUM AD SPOT' for 'Xan\_LS' shows a woman in a pink bikini. At the bottom right, a 'MEET FUCK FRIENDS' section includes a 'JOIN FREE' button. A large, faint watermark of a woman in a similar pose to the Gold Ad Spot is visible in the background.

**WG DIRECTORY**

POWERED BY UTHERVERSE

HOME TOP 10 SEARCH SPECIALS REVIEWS WG LOGIN

**GOLD AD SPOT**

Hello Gentlemen,  
Welcome to the WG Directory and the sensational world of RLC Working Girls!

This gorgeous new directory allows RLC members to connect with available Working Girls quickly and efficiently while also allowing WG's the opportunity to properly showcase their many talents.

Because of the UNIQUE experience an RLC working girl offers I recommend CLICKING HERE to familiarize yourself with the type of service they provide.

So enjoy your search and don't be shy, my girls can't wait to meet you!

xoxo MamaSIN

**BROWSE**  
CLICK HERE  
TO BROWSE THE WG DIRECTORY

**QUICK SEARCH**

Gender: Any  
Aged: Any  
Offering: ☐ Audio ☐ Cam ☐ Fetish ☐ Toys

SEARCH NOW

**TOP WG'S**

**Xan\_LS**  
PLATINUM AD SPOT

**MEET FUCK FRIENDS**  
JOIN FREE



WG DIRECTORY ADVERTISEMENT PLANS:				DIRECTORY FEATURES:
AD PLAN TYPE:	SILVER	GOLD	PLATINUM	WG STATISTICS:
Upload 4 Photos	☆	☆	☆	Allows potential clients to view your stats such as your height, body shape, eye color etc.
Ad searchable in Basic & Advanced	☆	☆	☆	
Ad visible in browse	☆	☆	☆	
Ad sorted by 'most recent RLC logins'	☆	☆	☆	
Age Verified Option	☆	☆	☆	RATES
Photo Verified Option	☆	☆	☆	Allows clients to view current rates.
Gender Verified Option	☆	☆	☆	PHOTO GALLERY
Ability to post Specials	☆	☆	☆	Showcase your best photos in your own photo gallery. Add up to 4 photos.
Post your schedule	☆	☆	☆	PROVIDED SESSION OPTIONS
Ad placed on Main Page		☆	☆	Let your clients know whether you provide cam shows, Phone-sex, Toy shows, Fetish sessions etc.
'Scrolling Ad' visible on ALL pages		☆	☆	
Rotating FEATURE spot on main page			☆	
Sexy Photo 'banner'			☆	
Shared Use of an RLC Alley Window		☆	☆	REVIEWS
Alley Window photo displayed 24/7		☆	☆	A review section is located on your profile and allows clients to view and post reviews.
				ABOUT ME SECTION
GOLD & PLATINUM membership holders will receive a professional billboard advertisement designed especially for them.				Express who you are and what you have to offer to your clients.
				SCHEDULE
				Your schedule allows clients to see when you are available for sessions.
				POSTED SPECIALS
ONE MONTH RUN	100 <sup>®</sup>	200 <sup>®</sup>	300 <sup>®</sup>	Displays your current specials.
THREE MONTH RUN	250 <sup>®</sup>	500 <sup>®</sup>	750 <sup>®</sup>	
SIX MONTH RUN	400 <sup>®</sup>	800 <sup>®</sup>	1200 <sup>®</sup>	

### WG BILLBOARD ADVERTISEMENTS

If you are a GOLD/PLATINUM membership holder you are entitled to have a billboard advertisement displayed in-world. Simply contact [wg@utherverse.com](mailto:wg@utherverse.com) include your member name, preferred slogan and color scheme.





# WG



## DIRECTORY

POWERED BY  
UTHERVERSE

[HOME](#)[TOP 10](#)[SEARCH](#)[SPECIALS](#)[REVIEWS](#)[WG LOGIN](#)

# WG

## PROFILE

[SIGN IN](#)

### ABOUT ME

**RavenAlexis**

Adult film actress Raven Alexis - I'm available for private, one on one webcam sessions - contact me on my profile or in game to spend some time with me. I love chatting with fans, and just meeting new people! Check out [www.ravenalexis.com](http://www.ravenalexis.com) too for hot pics and video. :)

### DETAILS

Gender:	Female	<input checked="" type="checkbox"/>
Age:	24	<input checked="" type="checkbox"/>
Race:	Native American	
Body Type:	slender	
Breast Size:	34 D	
Height:	53	
Tattoos:	2	
Piercings:	none	
Hair Colour:	brown	
Eye Colour:	hazel	
Real Photos:	Yes	
Sexual Pref:	Bisexual	
Last 30 Days:	0	
All visitors:	4613	
Points:	0	

### SESSION OPTIONS

	Web Cam	<input checked="" type="checkbox"/>
	Audio	<input checked="" type="checkbox"/>
	Fetish / BdsM	<input checked="" type="checkbox"/>
	Toys	<input checked="" type="checkbox"/>

### SCHEDULE

Mon	ON
Tue	ON
Wed	ON
Thur	ON
Fri	ON
Sat	ON
Sun	OFF

### RATES

5 minute slots      © 300.00

### POSTED SPECIALS

SPECIAL	FROM	UNTIL
---------	------	-------

### MY REVIEWS

[Add a Review](#)   [Add a Comment](#)

Posted By: Anonymous - 12 months ago

Overall: ★★★★★

Truly a STAR in all aspects!!!



**RLC** profile



pay me



contact me

## A GUIDE TO FINDING NEW CLIENTS:

*This guide will show you examples of ways to find new clients/members and benefit from our Affiliate program. (see below)*

### CRAIGSLIST POSTINGS:

Posting on CL is a great FREE way to advertise your WG services.  
Posting is quick, easy and you can advertise all over the world!  
First you will need to set up a posting account:

#### OPEN A CRAIGSLIST ACCOUNT

1. Go to [www.craigslist.com](http://www.craigslist.com)
2. Select a city (ANY city you like)
3. Go to SERVICES and select EROTIC
4. In the top right corner, select POST
5. In the top right corner, select 'apply for account'
6. Fill in your email address, verification word and create
7. Check your e-mail, click LINK to activate account
8. Create a password
9. ACCEPT the CL 'Terms of Use'

**Perfect! Now you should be in the home page of your new CL posting account.**

Some CL cities are more popular than others, meaning they are viewed by a larger audience.

To tell whether a city is worth advertising in, check to see the number of other postings. In general, many postings means many viewers.

We recommend most US cities as well as London, Toronto and Vancouver.

#### CL SECTIONS TO USE:

EROTIC (service)

W SEEKING M (personals)

CASUAL ENCOUNTERS (personals)

MISC ROMANCE (personals)

ADULT (gigs)

## BUILDING YOUR AD

Now that you have the ability to post your ads, you will need to create an eye-catching yet informative ad. You will need to include info such as services you provide, cost and contact info. Also, a sexy and enticing photo is key to creating an attractive ad.

**AD OUTLINE:** *Your goal when creating an ad is to get the viewer to visit your profile, become a member then become your client. Your ad should include the following.*

**AD Headline:** Choose a header that will attract attention. Decorate your header and make it stand out from the rest.

**AD Body:** Say hi and introduce yourself. Ask them to come visit you in World, tempt them with your dirty talk. Brag about your skills, and always mention 'specials'. Post a link to your WG Directory Profile Page and/or MSN. Then tease theme with a kinky question. The body of your ad should be **FLIRTY and INTRIGUING!**

**AD Photo:** Choose a SEXY flattering photo(s), random porn photos off the internet are fine, but they are never as successful as real, personal photos.

**'ASK ME FOR MY NAUGHTY PHOTOS!'**

**'SEE MORE OF MY PHOTOS ON MY WEBSITE'**

**HAVE YOU EVER SEEN A SEX MACHINE?'**

**YOU CONTROL WHAT WE DO!'**

**'DO WHATEVER YOU WANT TO ME!'**

**'THINK YOU'RE GOOD IN BED? PROVE IT!'**

**HAVE YOU EVER EXPERIENCED VIRTUAL SEX?'**

**I TURN INTO A SEX FREAK WHEN I'M IN RLC!'**

## INTERESTED IN LEARNING MORE?

This is just ONE example on how to be a successful WG. If you are interested in taking FULL advantage of your WG status, I've created a **Tips & Tricks Guide** which is available by request. Learn how to:

- Benefit from Dating Sites
- Use adult sites to your advantage
- Create a seductive profile write-up

- Business Card 'How to'
- Make a TGP site
- And more!



## RULES

### WG RULES OF CONDUCT

\*As a verified or listed WG, you are held to a higher standard because you are being represented and endorsed by Red Light Center as you are listed in our official WG directory.\*

If you do not abide by the guidelines outlined below, your Working Girl/Guy Badge may be removed by Uthervers® World Operations, and further appropriate action against your associated accounts will be considered.

1. You must be a VIP member to become a Working Girl or Guy.
2. **You must wear your WG badge at all times when you are working.**
3. You are only allowed to solicit in certain areas of Red Light Center. For a full list of areas you are allowed to solicit in, please check the [WG FAQ](#).
4. You are only allowed to solicit in Private Message. Do not solicit your WG services in General Chat.
5. Be considerate of your fellow WG's, attempts to discredit a WG's profile or name will not be tolerated.
6. Deception of clients will not be tolerated.
7. Be aware of and abide by the [Red Light Center Rules of Conduct](#) and [Terms of Service](#) at all times.
8. Respect each other, Uthervers Staff and Volunteers.
9. If services are not provided in full, you must refund the client. No exceptions.

**These rules apply to all WG's.**



## TIPS AND TRICKS:

Now that you have a good understanding of what an RLC Working Girl is, here are a few tips and tricks to help make you the best WG you can be!

First off, let me recommend exploring the RLC World and gaining a solid understanding of RLC virtual sex by playing around with other members. Test your virtual sex skills out with our Sex Bots located in the Fantasy Hotel. With the Bots you can experiment with all the different sex positions and learn how to create a mind blowing sex session that will leave your clients begging for more.

The moment you stop enjoying being a WG is the moment you should hang-up your WG badge and find other ways of making money. Just because you are behind a computer doesn't mean your client can't sense your attitude and why bother doing anything you don't like, right?

Be friendly, exciting and genuine. You will be reviewed, and while a BAD review can hurt your business for a while, a GOOD review will ensure you are busy and your Rays account full. If you are irritable, short, snobby (unless you are providing a domination session) or boring, your clients will not only never repeat with you...but they will also ensure that other potential clients don't waste their Rays.

If all this seems strange to you and you are not sure you have the personality to carry out a steamy virtual sex session with a complete stranger over the net, then consider creating an 'alter ego' and become someone completely different.

**The Innocent Sponge**—Inexperienced and willing to be taught

**The Sexual Daredevil**—Willing to try anything twice, no fetish is off limits

**The Nympho Slut**—Porn-star attitude, promiscuous and proud of it. Needing sex 24/7

**The Dominatrix**—You enjoy giving verbal lashings, you are superior and rule at the art of humiliation

Be creative and invent an alter ego that will make you feel comfortable and confident.

**The point is to enjoy yourself and your sessions will reflect that.**

This goes without saying... DO NOT rip-off clients. If you think you'll get away with accepting Rays from clients and logging out and/or changing your name before your session... you won't! Your ripped- off client will make sure it's known to other members that you are a scammer. Although RLC does not get involved with these kinds of disputes, we do have the ability to identify you even if you constantly change your name. You won't fool anyone, you will only hurt yourself so always be honest!

Consider the power of choice. Your clients will love it if they have some input on your Avatars appearance during their session. Maybe they like pink hair and piercings or maybe a natural look is more their style, mentioning that you are 'open to outfit and appearance requests' might attract more clients who have special tastes.

Comfort is **key!** Make sure your client is comfortable and relaxed and you've won the battle.

If you 'bring your clients into your world' by connecting with them, your sessions will be a success and you will be considered a top WG. Oil, squeeze bottles, ribbon, ice cubes, wax etc. are all common household items and perfect erotic tools to send your client into ecstasy!

While I'm sure you have other potential clients to book and satisfy, if you are a clock watcher and rush your sessions you will lose regulars and probably receive reviews reflecting your up-tight attitude. I can't stress enough how important a good reputation is to your business. Take your time with your clients and make them feel special. You are there to satisfy their needs and I advise that you prepare for the possibility that some sessions might run a little late as some clients take longer than others. Have you ever had to rush an orgasm?? Not very satisfying is it?!

We want your career as an RLC WG to be an exciting and lucrative one. WG info sessions, workshops and meet- and greets are available to offer support and valuable information to ensure your success with us. Contact me for upcoming event dates.

Lastly and most importantly... be safe! Just because you are behind the safe confines of your computer doesn't mean that you have nothing to worry about. Unfortunately we live in a very sick world and you can never be too careful when giving out personal information. Your clients could be anyone! People lie, and even if a client appears to be the sweetest person in the world, it doesn't mean they don't have ill intentions. Protect yourself; NEVER EVER tell someone your real name, where you live, the school you went to etc. Facebook, MySpace or search makes it very easy to track someone down.

---

## CONTACT

If you have further questions, concerns or suggestion please email the current WG Manager:

[wg@uthervers.com](mailto:wg@uthervers.com)

---